

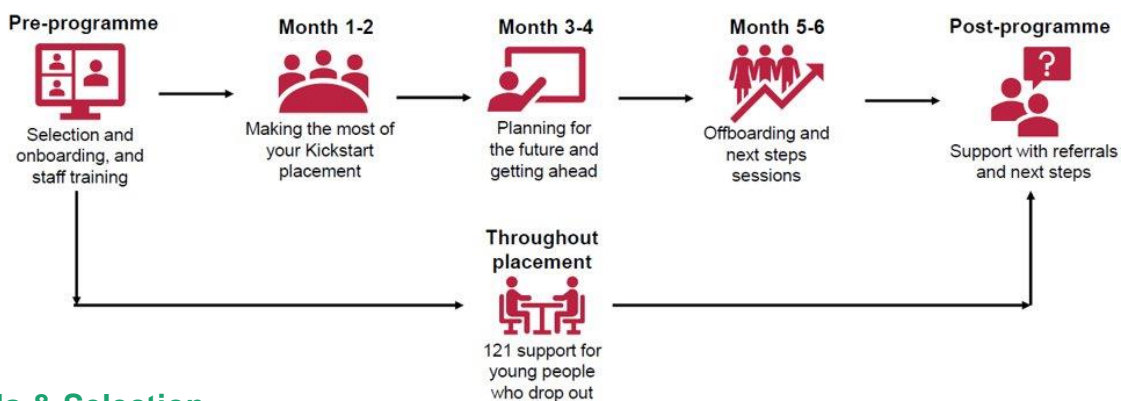


The Prince's Trust is supportive of the Government's Kickstart Scheme, as part of their 'Plan for Jobs' in the wake of the coronavirus pandemic. **As a leading youth charity, we can help employers to offer the best possible end-to-end support to young people, ensuring the scheme reaches the Government's intended audience; those at risk of long-term unemployment.**

## Our Wraparound Support Offer

As **youth employment experts**, we are offering **wraparound support** both directly to employers and via Gateway organisations, drawing on the expertise of our national network of youth workers, our in-house design, policy, and partnerships teams, and our strong relationships with DWP Work Coaches across the UK.

Below details the wraparound support package we can offer small and mid-sized employers, who are bidding for less than 30 placements via a gateway organisation.



## Referrals & Selection

We will support delivery of a placement selection process that prepares young people for the opportunity to move into a Kickstart placement, or if not successful to access other opportunities through The Trust.

Our support package includes:

- Group 'Welcome Sessions' with a PT youth worker, supporting young people referred to apply for Kickstart placements to understand the opportunities available and what a Kickstart placement is likely to involve
- 121 session(s) with a PT youth worker, advising and supporting the young person to understand their individual skills and areas for progress, and how they can best access the opportunities available
- a group 'digital literacy' onboarding session with a PT youth worker, supporting young people to understand how to access the MS Teams resources and sessions, ensuring they can make the most of using the technology during their placement
- Support for the employer to deliver a selection process/event that is accessible for young people who have been unemployed and may face barriers to a traditional interview process, increasing the diversity of your potential Kickstart cohorts

## Onboarding

We will offer support for employers to onboard young people, including integrating our proven workshops and resources into their training and support package, for both young people taking part in Kickstart and employees acting as internal buddies or mentors.

Our support package includes:

- Access to our 'All Worth It' personal development workshops and resources, building confidence and interpersonal skills for young people through group workshops and activities
- PT youth worker led employability workshops, with content specifically designed for the induction period of the placement, such as professionalism in the workplace, time management, and timekeeping. We will work with employers to integrate alongside training they can deliver in-house, to ensure an effective induction for young people on placement.
- We will also support employers to train their staff as buddies/mentors for young people taking part in Kickstart by providing training materials for employer to deliver, and a PT-led training session for the staff to understand and support some of the barriers young people on the placements are likely to face.



## Ongoing Support

PT youth workers will offer ongoing support to young people and employers during the placement, using our expertise and resources to aid retention on the programme, upskill employees to work with previously unemployed young people, and facilitate peer support for young people and employer staff supporting the placements.

Our support package includes:

- Support for young people who drop-out during the placement to access other opportunities through The Trust, including referrals from the employer and providing information that will support young people to self-refer
- PT youth worker led employability sessions at key points during the placement. We will work with employers to integrate PT led sessions in to their training series, providing an effective and supportive training series throughout the placement.  
Topics include teamwork, managing mental health, social media for work, goal setting, and inspiring careers sessions.
- Young people on placement will also be able to access monthly check-in sessions with their PT youth worker.

## Offboarding

We will continue to offer support during the final period of the placement, supporting employers to offboard young people from the placement in a way that maintains their confidence and supports them to continue moving forward.

Understanding that many employers may not be able to offer a permanent role after the Kickstart placement, we will support young people to consider and plan for their next steps, and provide assurance for employers that young people are not left unsupported.

Our support package includes:

- Support for referral by employers (including buddies/mentors) and self-referral to Trust, providing information on what The Trust offers via a cohort-wide virtual info session and appropriate digital information materials that employers can share.
- PT youth worker led workshops to revisit key skills for job hunting, using applied learning and supporting young people to consider and plan their next steps

## Post-Placement

A vital part of the Kickstart Scheme will be supporting young people as they move from the 6-month paid placement to their next steps, and it will be crucial for the success of the scheme that young people do not slide backwards into another period of long-term unemployment.

We know we can add significant value to Kickstart placements by offering support to young people post-placement, especially where employers are not able to offer continued or permanent roles.

Our support package includes:

- Continued access to Trust opportunities via employer referral or self-referral by young people
- PT youth worker led cohort-wide virtual info session, providing encouragement to take their next steps, and information on support available from The Trust including upcoming Explore Enterprise courses and Get Hired opportunities

**Estimated Price: £1,000 + VAT per young person**

To register your interest in working with The Prince's Trust, please email [kickstart@princes-trust.org.uk](mailto:kickstart@princes-trust.org.uk) with the word **WRAPAROUND** in the message title, including details on the number of placements you plan to offer and provisional start date.

